

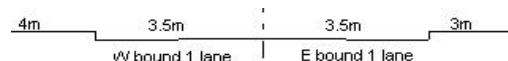
YEAR 2019

CORE STATION 5010

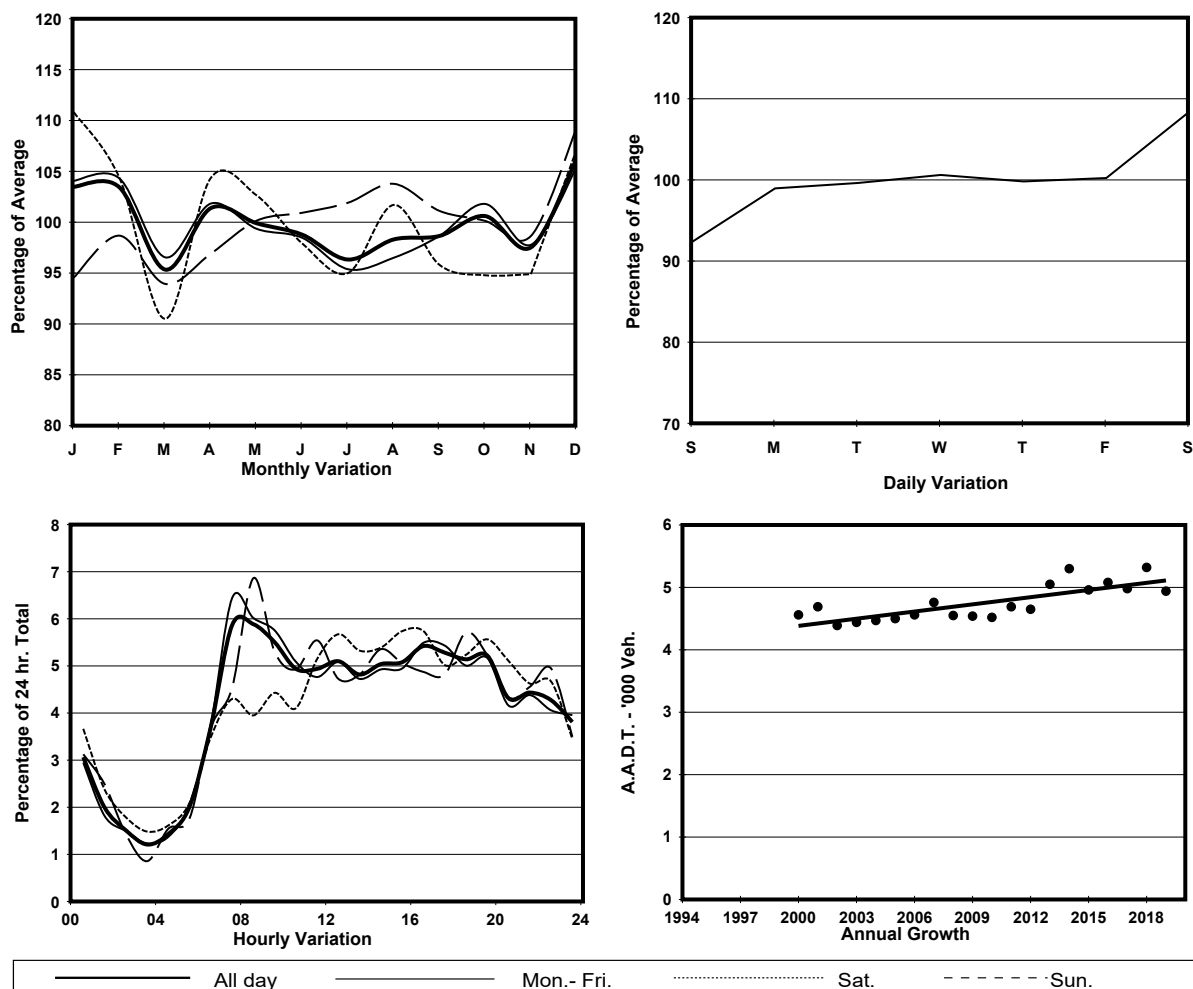
ROAD NETWORK MAJOR

ROAD TYPE LOCAL DISTRIBUTOR

LINK KWAI LUEN RD (from KWAI SHING CIRCUIT EASTERN JUNCTION to KWAI SHING CIRCUIT WESTERN JUNCTION)



1. TRAFFIC FLOW VARIATION AND GROWTH



2. TRAFFIC CHARACTERISTICS (BY DIRECTION)

Parameter	All - Day	Mon. - Fri.	Sat.	Sun.
EAST BOUND				
A.A.D.T.	2300	2280	2420	2340
R 12 / 24 - %	62.9	63.6	62.5	60.5
R 16 / 24 - %	81.7	82.2	81	80.7
AM Peak Hour	0800-0900	0800-0900	0800-0900	0900-1000
One-way flow at AM peak hour	130	140	140	120
T - % (AM)	-	-	-	-
PM Peak Hour	1700-1800	1700-1800	1800-1900	1600-1700
One-way flow at PM peak hour	130	130	160	130
T - % (PM)	-	-	-	-
Prop.of commercial vehicles - 16 hr.	-	-	-	-
WEST BOUND				
A.A.D.T.	2640	2670	2960	2260
R 12 / 24 - %	63	63.7	62.6	59.5
R 16 / 24 - %	80.8	80.8	82.1	79.3
AM Peak Hour	0700-0800	0700-0800	0800-0900	0700-0800
One-way flow at AM peak hour	170	190	230	100
T - % (AM)	-	-	-	-
PM Peak Hour	1600-1700	1600-1700	1600-1700	1600-1700
One-way flow at PM peak hour	150	160	150	140
T - % (PM)	-	-	-	-
Prop.of commercial vehicles - 16 hr.	-	-	-	-

3. OTHER INFORMATION AND COMMENT